



BEAUFORT GREEN

Prince Of Wales Drive, SW11

£590,000



A beautifully finished, two double bedroom ground floor apartment in this sought after Prince of Wales Drive Mansion block. The property has a separate kitchen and good ceiling height throughout.





BEAUFORT GREEN

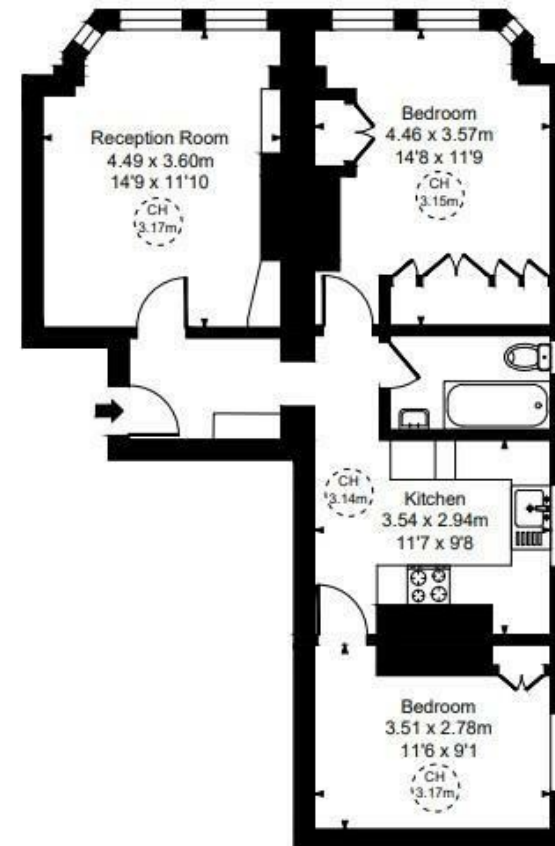


BEAUFORT GREEN

Cyril Mansions, Prince of Wales Drive, SW11

Approximate Gross Internal Area
65.11 sq m / 701 sq ft

(CH = Ceiling Heights)



Ground Floor

At a Glance.

- Two Double Bedrooms
- Directly in front of Battersea Park
- Close Proximity to the River and Albert Bridge
- Ground Floor Mansion Block Apartment
- Communal Gardens
- Well Finished Throughout

This plan is not to scale. It is for guidance and not for valuation purposes.
All measurements and areas are approximate only, and have been prepared in accordance with the current edition of the RICS Code of Measuring Practice.

BEAUFORT GREEN

02074594100

charlie@beaufortgreen.co.uk

263 New Kings Road
London
SW16 1DB